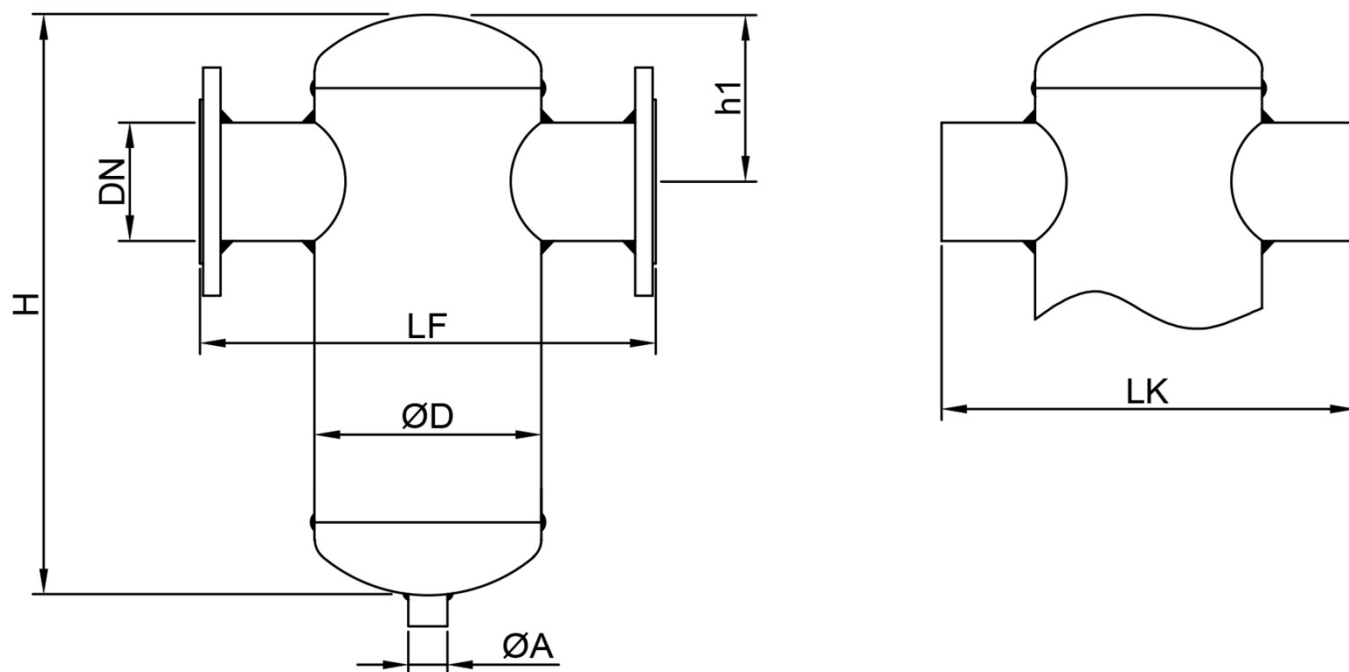


As a result of oxygen diffusion taking place generally in plastic pipes, there occurs erosion in the installation and residues and dirt due to such erosion start to circulate in the installation. Considering the use of many classical trap filter within the installation;

With the intent of taking out the dirt and residue, trap filters are required to be opened by means of wrench for service. At that time, the system needs to be stopped and comfort is interrupt. Separator residue and dirt separator is used one piece per installation. Opening the nodular valve at the bottom of the product to discharge dirt, it is easily thrown out. There is no need to stop the system. Residue and dirt inside the water cause failures, abrasion and performance decrease in pumps, motorized valve and other armatures, constantly increasing maintenance requirements and corrosion. Thanks to this product, difficulties in maintenance and cleaning of classical trap filters are eliminated and likely failures due to such difficulties are prevented.





MAXIMUM OPERATING PRESSURE : 10 BAR

MAXIMUM OPERATING TEMPERATURE : 110 °C

HOUSING: CARBON STEEL

Connection Diameter		Dimensions					
DN	Inch	ØD	LK	LF	H	h1	ØA
20	3/4"	88.9	190	240	230	80	1/2"
25	1"	88.9	190	240	230	80	1/2"
32	1 1/4"	88.9	190	240	230	80	1/2"
40	1 1/2"	114.3	225	260	270	105	1/2"
50	2"	114.3	280	280	350	125	1/2"
65	2 1/2"	139.7	315	315	430	140	1/2"
80	3"	168.3	365	365	470	165	1/2"
100	4"	219.1	420	420	490	175	1/2"
125	5"	273	475	475	620	215	1"
150	6"	273	500	500	640	260	1"
200	8"	400	715	715	850	275	1"
250	10"	400	750	750	1000	300	2"
300	12"	500	780	780	1240	325	2"